



STAMFORD CHARTER SCHOOL FOR EXCELLENCE

2020-21 Reopening Town Hall #2

We Will Begin Shortly!!

Our Mission

The mission of the Stamford Charter Schools for Excellence is to prepare our scholars to compete for admission to and succeed in top public, private and parochial high schools by cultivating their intellectual, artistic, social, emotional, and ethical development. Education in the midst of a global pandemic necessitates a shift in the manner by which instruction is delivered, but by no means does it alter our mission or deviate from our intent to ensure all of our scholars have equitable access to our high-quality educational programs.

Within this presentation, we describe how we will educate our scholars through careful planning and the necessary agility to adapt based on local health data, individual considerations, and surrounding circumstances.

It should be noted that these plans are considered living documents as implementation and health data will likely inform better practices and require constant evolution in execution.



REOPENING PLANS FOR SEPTEMBER 8TH, 2020

- ▶ Two Models
 - ▶ Hybrid Learning
 - ▶ Fully Remote



HYBRID LEARNING

► Scholars will be pre-assigned to one of two self-contained groups to attend school in person on an alternating schedule for two days a week and participate in remote instruction for the remainder of the week.

Grades K-6	Monday	Tuesday	Wednesday	Thursday	Friday
On Campus	Group A	Group A	None	Group B	Group B
At Home	Group B following distance learning plan with heavy teacher support	Group B following distance learning plan with heavy teacher support	All groups at home for independent learning and project-based learning Teacher meetings, professional development and planning. School closed for deep cleaning and disinfection.	Group A following distance learning plan with heavy teacher support	Group A following distance learning plan with heavy teacher support

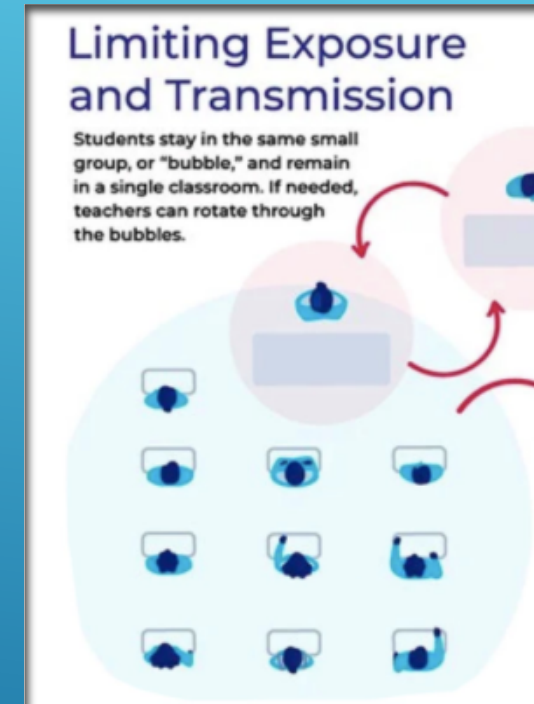
HYBRID LEARNING, CONT.

►Capacity

- No more than 14 scholars will be in a classroom at a time.

►Cohorts

- The use of “cohorting” will play a crucial role in minimizing transmission and facilitating testing and tracing procedures should they be enacted.
- Scholars from the same household will be assigned to the same self-contained pre-assigned group
- Scholars will remain with their classroom cohort throughout the day,



HYBRID LEARNING, CONT.

► Safety and Social Distancing

- Stamford Excellence will use one-way markers, signs, and postings to control foot traffic and allow for maximum distancing, including at the school's entrance and throughout the school building in common areas, bathrooms, and stairways.
- Classroom furniture including the teachers desk will be spaced to provide six feet of distancing where possible. Alternatively, where six feet of social distancing is not possible, we will procure partitions/sneeze guards or other suitable protective dividers to distance students and staff.
- Bathrooms will be used one at a time during a designated time for the cohort.



HYBRID LEARNING, CONT.

► Safety and Social Distancing, cont.

- ▶ The gym/cafeteria will be used to create additional overflow space for instruction and social distancing.
- ▶ Additionally, social distancing markers will be placed on proximal outdoor spaces directly outside of the building where students may line up for entry or buses.
- ▶ Each student will have their own baggie, cubby, desk or bin for their belongings, which will be kept next to them in the classroom to reduce foot traffic across the classroom.
- ▶ Students will also be discouraged from sharing items or materials to prevent contact or transmission. Hand and respiratory hygiene will be taught and practiced daily
- ▶ There will be no use of common areas such as water fountains.
- ▶ No classroom rugs and communal bookshelves/classroom libraries.
- ▶ No intervention and afterschool tutoring programs or extracurriculars of any kind.



HYBRID LEARNING, CONT.

► Safety and Social Distancing, cont.

- Arrival & Dismissal will look different than in previous years and on a staggered schedule. Families will not be permitted in the building.
- All entrants and occupants of the facility, which will be restricted to scholars, staff, and essential personnel, will be required to wear face masks at all times.
- No touch hand sanitizing stations will be available on all floors.
- Refusal to wear a mask will be denied access to the building.



HYBRID LEARNING, CONT.

► A Day In The Life (Before School)

- Students will not need backpacks as we will send homework and notices digitally through Clever and School Messenger. Scholars should bring their lunch and a bottle of water for the day.
- If your scholars or their siblings are sick or are not feeling well, keep them home.
- Families must do a pre-screening of their child's temperature and well-being before taking them to the bus stop and boarding the bus.
- On the school bus, siblings will be required to sit next to each other as a precaution.
- All scholars will be required to wear a face covering and abide by regulations in accord with the district's transportation guidelines on the school bus policy.
- Upon arrival, all children will be screened again prior to entry.
- The school will ask the District to sanitize and clean the buses prior to our students boarding to go home.



► A Day In The Life (Before School)



► Parents/guardians and school staff will be instructed that any student or staff member with a fever of 100°F or greater and/or the following symptoms of possible COVID-19 virus infection should not be present in school:

- Fever or chills (100°F or greater)
- Cough;
- Shortness of breath or difficulty breathing;
- Fatigue;
- Muscle or body aches;
- Headaches;
- New loss of taste or smell;
- Sore throat;
- Congestion or runny nose;
- Nausea or vomiting; and/or
- Diarrhea

**HYBRID LEARNING,
CONT.**

HYBRID LEARNING, CONT.

► A Day In The Life (At School)

- Scholars will use the restroom on schedule with their cohort, remain in the classroom 6 feet socially distant in their seats with a face mask on throughout the day.
- Scholars will not be permitted to freely walk around the classroom or leave their designated cohort.
- There will be breaks built in to stand and stretch in their designated space.
- School lunch will be delivered to each cohort and distributed by a cohort staff member, scholars may bring lunch from home.
- Scholars will eat lunch in the classroom.



HYBRID LEARNING, CONT.

► A Day In The Life (Distance Learning)

- Scholars be receiving similar instruction during days they are learning from home, the schedule will closely mirror the one they will have when they are learning in the building.
- It is imperative that scholars are prepared to receive instruction as outlined in the schedule.

Hybrid Distance Learning	
8:30-9 am (Reading Whole Group)	<ul style="list-style-type: none">• Direct Instruction Video• Simulcast Instruction• Journeys Independent Work
9-10 am (Reading Small Group)	<ul style="list-style-type: none">• Independent Reading• Guided Reading via BookNook (self-guided)
10-11 am (Math)	<ul style="list-style-type: none">• Direct Instruction Video• Simulcast Instruction• Independent Work
11-12 pm (Writing/SS)	<ul style="list-style-type: none">• Direct Instruction Video• Simulcast Instruction• Independent Work
12-1 pm	<ul style="list-style-type: none">• LUNCH
1-3 pm (Tutoring)	<ul style="list-style-type: none">• Club Excellence• Intervention Groups

HYBRID LEARNING, CONT.

► A Day In The Life (After School)

- SCSE will not participate in extracurricular, co-curricular or interscholastic activities. Students and staff will only engage in extracurricular activities that can be shared/provided remotely
- Scholars must be picked up on time for the safety of all cohorts



FULL-TIME REMOTE LEARNING

Grades K-6	Monday	Tuesday	Wednesday	Thursday	Friday
At Home	All groups following distance learning plan with heavy teacher support	All groups following distance learning plan with heavy teacher support	All groups at home for independent learning and project-based learning Teacher meetings, professional development and planning.	All groups following distance learning plan with heavy teacher support	All groups following distance learning plan with heavy teacher support

FULL-TIME REMOTE LEARNING, CONT.

Full Time Distance Learning		
Time	Subject	Content
8:30-9 am	Reading Whole Group	<ul style="list-style-type: none"> • Direct Instruction Video • Simulcast Instruction • Journeys Independent Work
9-10 am	Reading Small Group	<ul style="list-style-type: none"> • Independent Reading • Guided Reading Groups via BookNook (teacher guided)
10-11 am	Math	<ul style="list-style-type: none"> • Direct Instruction Video • Simulcast Instruction • Independent Work • Small Group w/ Teacher Support
11-12 pm	Writing/SS	<ul style="list-style-type: none"> • Direct Instruction Video • Simulcast Instruction • Independent Work • Small Group w/ Teacher Support
12-1 pm	LUNCH	
1-3 pm	Club Excellence	<ul style="list-style-type: none"> • Independent Work • Science Projects • Specials Classess • Tutoring (IEP & struggling scholars)

SCHOLAR SAFETY

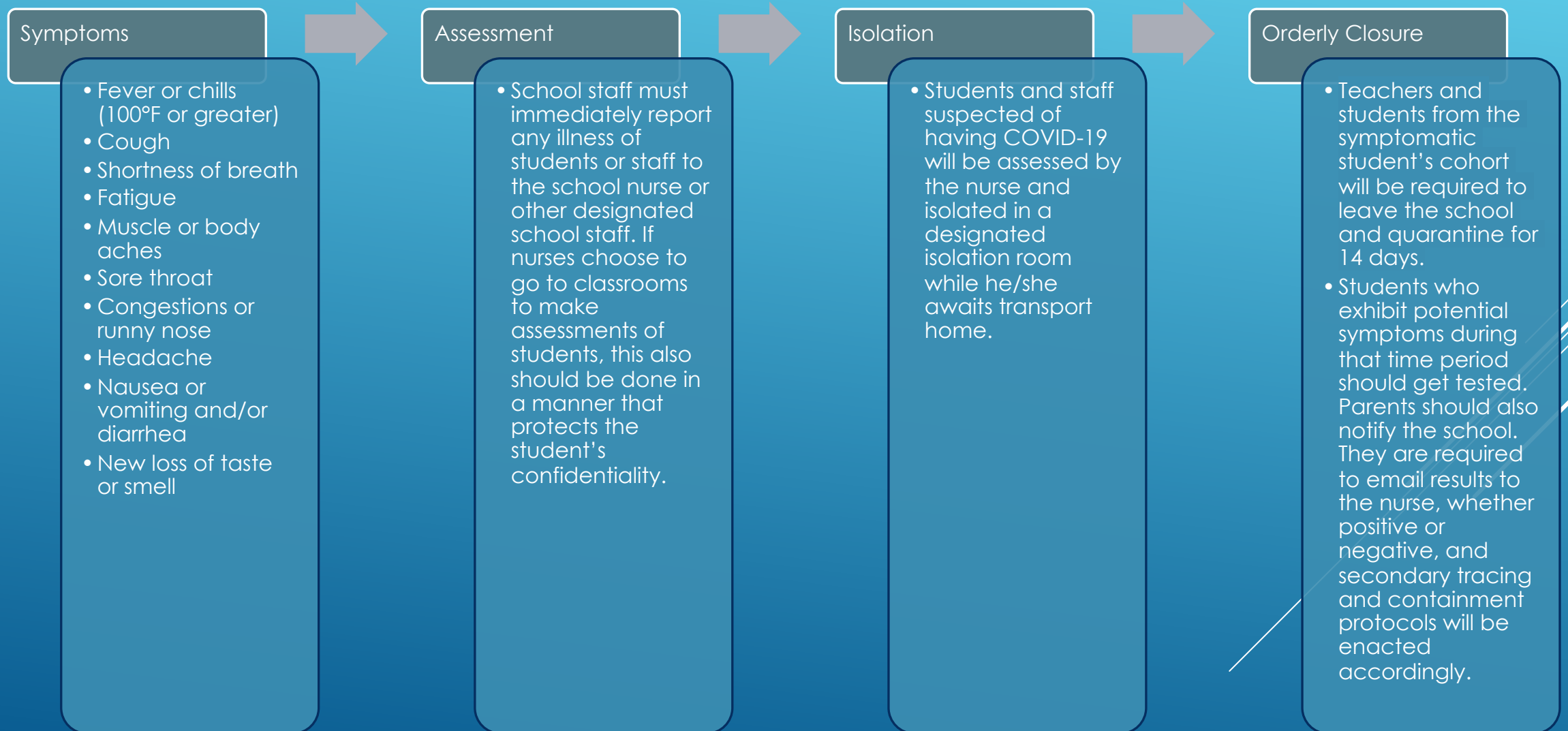
► Screening

- Additionally, temperature checks and use of hand sanitizer will be required at every point of entry. All persons will have their temperatures checked via a contactless thermometer.
- Any individuals with a fever or above normal temperature (100°F or greater) will be denied access.
- All persons with an acceptable temperature will be allowed access and be required to use sanitizer at a contactless station upon entry to the building
- No parent will be allowed to come in the building.



SCHOLAR SAFETY, CONT.

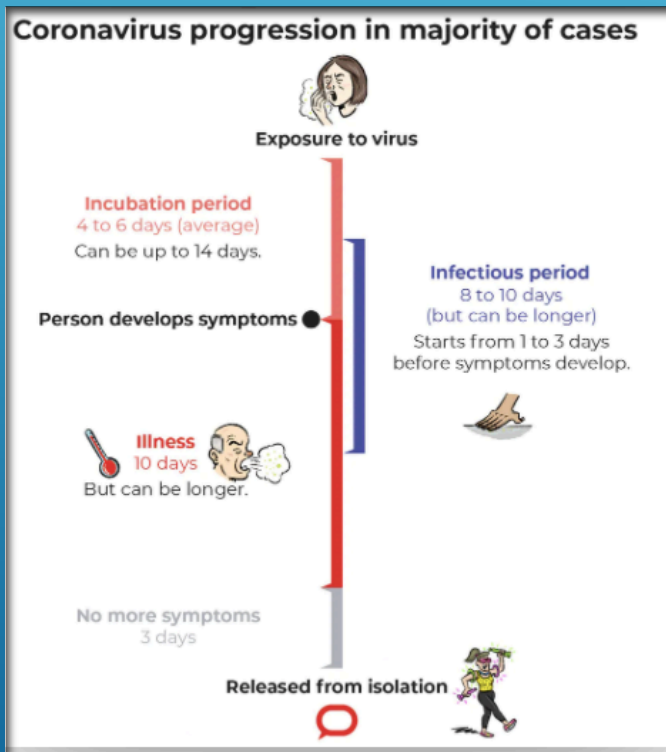
► Containment



SCHOLAR SAFETY, CONT.

► Exposed Individuals

- SCSE will follow the CDC and DOH recommendations for communication with exposed individuals' families. Parents/guardians will receive a digital letter via our school communication system, School Messenger.
- The entire cohort (which can include scholars on the bus) must quarantine for 14 days and will transition fully into remote learning during this time.



SCHOLAR SAFETY, CONT.

► Return to School After Symptoms, Positive Results

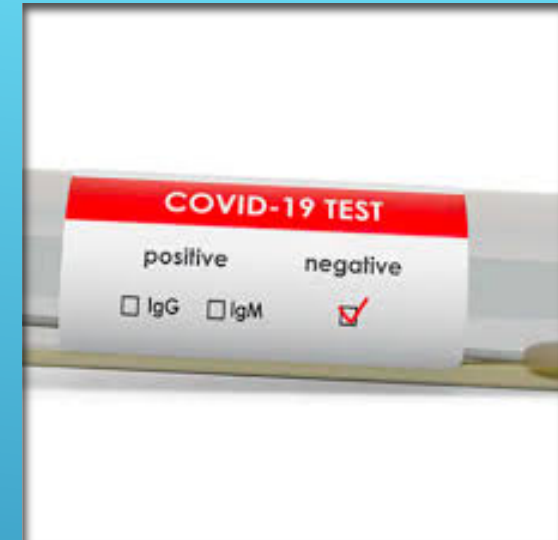
- If a person is diagnosed with COVID-19 by a healthcare provider based on a test or their symptoms or does not get a COVID-19 test but has had symptoms, they should not be at school and should stay at home until:
 - It has been at least fourteen days since the individual first had symptoms;
 - It has been at least three days since the individual has had a fever (without using fever reducing medicine); and
 - It has been at least three days since the individual's symptoms improved, including
 - Cough and shortness of breath.



SCHOLAR SAFETY, CONT.

► Return to School After Symptoms, Negative Results

- SCSE will follow CDC guidance for allowing a student or staff member to return to school after exhibiting symptoms of COVID-19. If a person is not diagnosed by a healthcare provider with COVID-19 (negative test by a physician, nurse practitioner, or physician assistant), they can return to school:
- Once there is no fever, without the use of fever reducing medicines, and they have felt well for 24 hours;
- If they have been diagnosed with another condition and has a healthcare provider written note stating they are clear to return to school.



LOGISTICS



► Cleaning & Disinfecting

- SCSE will follow the CDC's Reopening Guidance for Cleaning and Disinfecting
- Cleaning, sanitizing, and disinfecting learning spaces, surfaces, common and high traffic areas will increase throughout the day
- Bathrooms will be cleaned and disinfected after use by each cohort
- The following will be cleaned every hour.
 - Hand rails
 - Door knobs
 - Push bars
 - High touch surfaces

LOGISTICS, CONT.

New Arrival & Dismissal Procedures



► Arrival & Dismissal

- Stamford Excellence will use one-way markers to control foot traffic and allow for maximum distancing at the school's entrance and exit points.
- Doors will open at 7:45 am and 3pm for dismissal
- All entry and exit point doors will be utilized to maintain social distancing, minimize clustering in the building and expedite the arrival and dismissal procedures.
- SCSE will utilize a staggered arrival and dismissal schedule.
- Parents will not be allowed to enter the building to pick up their scholars.

LOGISTICS, CONT.



► Busing

- Bus stops and times will be distributed before the year begins.
- In a hybrid-learning environment, transportation will still be provided to students who have chosen on site learning based on the guidelines.
- All families who receive busing services will be required to participate in a meeting to review expectations, rules & regulations.
- Busing is available for scholars in grades K-6.

LOGISTICS, CONT.

► **Food Service**

- ▶ Breakfast and lunch will be served daily.
- ▶ Meals will be delivered to the classrooms and distributed by a staff member in the cohort.
- ▶ Parents are encouraged to send in breakfast and/or lunch with their scholars. Please be sure to send 100% fruit juice, water or milk.
- ▶ We are a NUT- FREE school.



FOLLOW UP QUESTIONS?

- ▶ My son usually goes to a different teacher for reading. How will this change with the new setup and exposure outside of his normal group and in class instruction? I fear that he will be held back due to the precautionary methods in place.
- ▶ On the virtual side how will this happen?
- ▶ If a child is struggling or need additional help from his/her teacher will this be made available virtually?
- ▶ Will it be mandatory for teachers and administrators to get tested prior to school opening and during?
- ▶ Are there updates to busing/bus monitors and how children will be socially distanced?
- ▶ Are you aware that there are certain uniform items not available for purchase?
- ▶ Uniform availability?
- ▶ Will a list of meals being served for breakfast and lunch be made public to parents prior to opening day?
- ▶ Will there be warm lunches?
- ▶ What happens during "shake breaks"?
- ▶ What does afterschool pick up look like?